

Hyland, Thomas

From: Gibson, Ornette
Sent: Thursday, November 10, 2011 3:06 PM
To: Hyland, Thomas
Subject: FW: Cleveland Innerbelt - Commercial Rd (at Central Viaduct - south) - IntelliFiber
Attachments: 2011-11-10 - RoadwayGateway-Commercial-Parking.pdf

FYI

From: Edward Kisiel [mailto:EKisiel@HNTB.com]
Sent: Thursday, November 10, 2011 3:04 PM
To: 'Maddern, Rodger A.'
Cc: 'Hedrick, Mark'; Malone, Curtice; Gibson, Ornette; 'utilities@ohio.net'; Kenneth Fertal; kishmael@hntb.com
Subject: Cleveland Innerbelt - Commercial Rd (at Central Viaduct - south) - IntelliFiber

Rodger,

After our discussions in the field last Thursday, 11/03 about IntelliFiber duct run, I made a call to Rick Colello and he confirmed ducts were built approx. having depth of cover at 36" requiring your duct run to be lowered (as we discussed) through the Gateway parking lot, see attached PDF. Not much can be done about raising or adjusting parking lot grading to mitigate since the slope is maxed out. Also noticed clearance might be getting tight on Commercial Rd. (I can provide more data on this if needed).

Thanks,
Ed

Edward J. Kisiel, PE

HNTB Corporation
Cleveland Innerbelt Bridge Project
2519 Detroit Avenue, Suite 202
Cleveland, Ohio 44113

Tel (216) 522-1140
Fax (216) 522-0554
Direct (216) 377-5846
ekisiel@hntb.com
www.hntb.com

11/10/2011 5:45:37 AM
 Model:Sheet2
 File:49633-S-RD-PLN17.dgn

(TO BE TURNED OFF AT AFC SUBMITTAL)

CHECK PRINT (INITIAL & DATE) CHECKED BY: BACKCHECKED BY: VERIFIED BY:
 MADE BY:
 CORRECTED BY:

DESIGNED: JTL
 CHECKED: JRC
 SCALE IN FEET: 1" = 40'

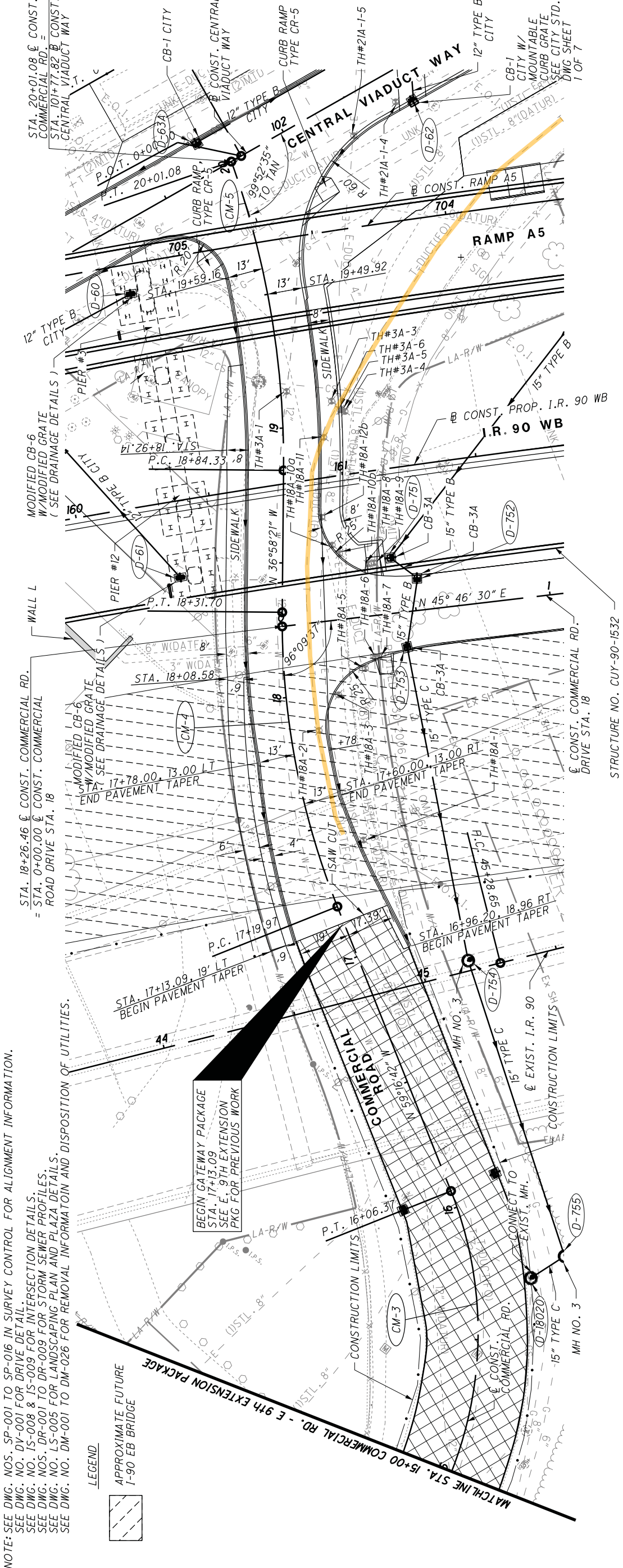
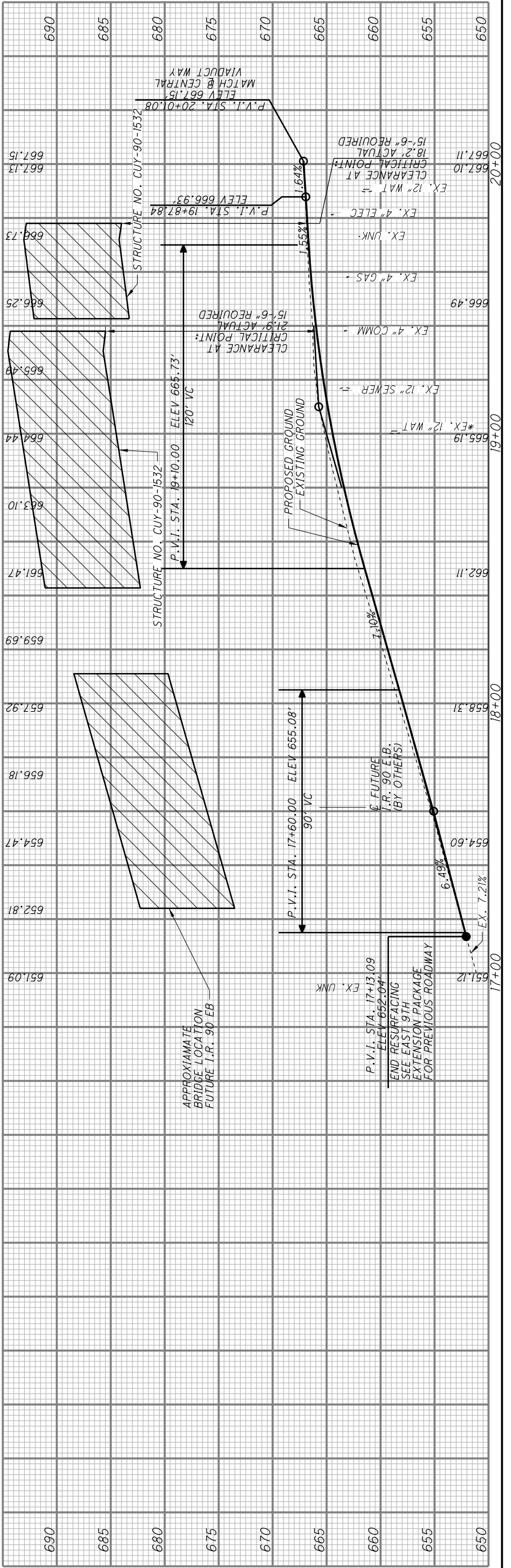
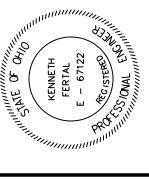


ROADWAY GATEWAY
 INNERBELT BRIDGES



NO.	REVISIONS	DATE
A	FINAL SUBMITTAL	08/17/2011
B	FINAL SUBMITTAL ADDITIONAL INFORMATION	08/23/2011
C	FINAL SUBMITTAL TO ODOT	09/30/2011
D	FINAL COMPLIANCE	11/03/2011

CUY-90-14.90
 STA. 17+00 TO STA. 20+01.08



NOTE: SEE DWG. NOS. SP-001 TO SP-016 IN SURVEY CONTROL FOR ALIGNMENT INFORMATION.
 SEE DWG. NO. DV-001 FOR DRIVE DETAIL.
 SEE DWG. NOS. IS-008 & IS-009 FOR INTERSECTION DETAILS.
 SEE DWG. NOS. DR-001 TO DR-009 FOR STORM SEWER PROFILES.
 SEE DWG. NOS. LS-005 FOR LANDSCAPING PLAN AND PLAZA DETAILS.
 SEE DWG. NO. DM-001 TO DM-026 FOR REMOVAL INFORMATION AND DISPOSITION OF UTILITIES.

LEGEND:
 APPROXIMATE FUTURE I-90 EB BRIDGE

BEGIN GATEWAY PACKAGE STA. 17+13.09
 SEE E 9TH EXTENSION PKG FOR PREVIOUS WORK

P.V.I. STA. 17+13.09
 ELEV 652.04
 END RESURFACING I.R. 90 EB (BY OTHERS) SEE EAST 9TH EXTENSION PACKAGE FOR PREVIOUS ROADWAY

APPROXIMATE BRIDGE LOCATION FUTURE I.R. 90 EB

STRUCTURE NO. CUY-90-1532
 P.V.I. STA. 19+10.00
 ELEV 665.73
 120' VC

STRUCTURE NO. CUY-90-1532
 P.V.I. STA. 19+87.84
 ELEV 666.93

P.V.I. STA. 20+01.08
 ELEV 667.15
 MATCH @ CENTRAL VIADUCT WAY

STA. 18+26.46 @ CONST. COMMERCIAL RD.
 = STA. 0+00.00 @ CONST. COMMERCIAL ROAD DRIVE STA. 18

STA. 17+84.33 @ CONST. COMMERCIAL ROAD DRIVE STA. 18

STA. 17+13.09 @ BEGIN PAVEMENT TAPER

STA. 16+96.20 @ BEGIN PAVEMENT TAPER

STA. 16+06.31 @ P.T.

STA. 17+78.00 @ END PAVEMENT TAPER

STA. 18+08.58 @ END PAVEMENT TAPER

STA. 18+84.33 @ P.C.

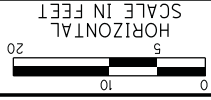
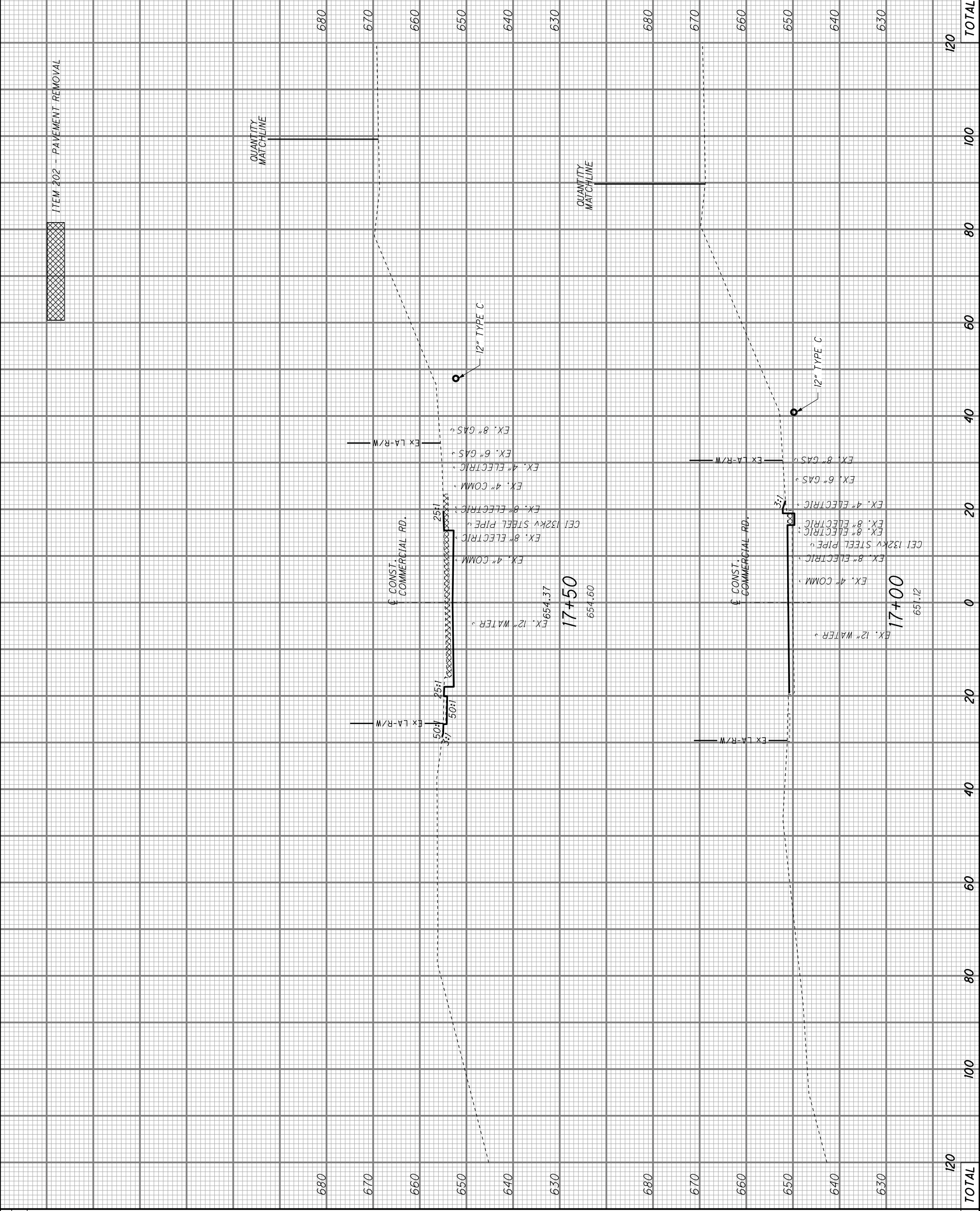
STA. 19+49.92 @ STA.

STA. 20+01.08 @ P.O.I.

MADE BY:	BACKCHECKED BY:	VERIFIED BY:
CHECK PRINT (INITIAL & DATE)	CHECKED BY:	CORRECTED BY:

(TO BE TURNED OFF AT AFC SUBMITTAL)

SEEDING	
END WIDTH	SO. YDS.



DWG. NO.
XS-130

146
349

DESIGNED
JTL
CHECKED
JRG

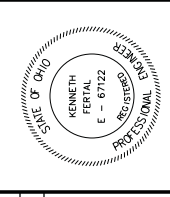
CROSS SECTIONS - COMMERCIAL
STA. 17+00 TO STA. 17+50

ROADWAY
GATEWAY



WILSH HNTB
DESIGN AGENCY

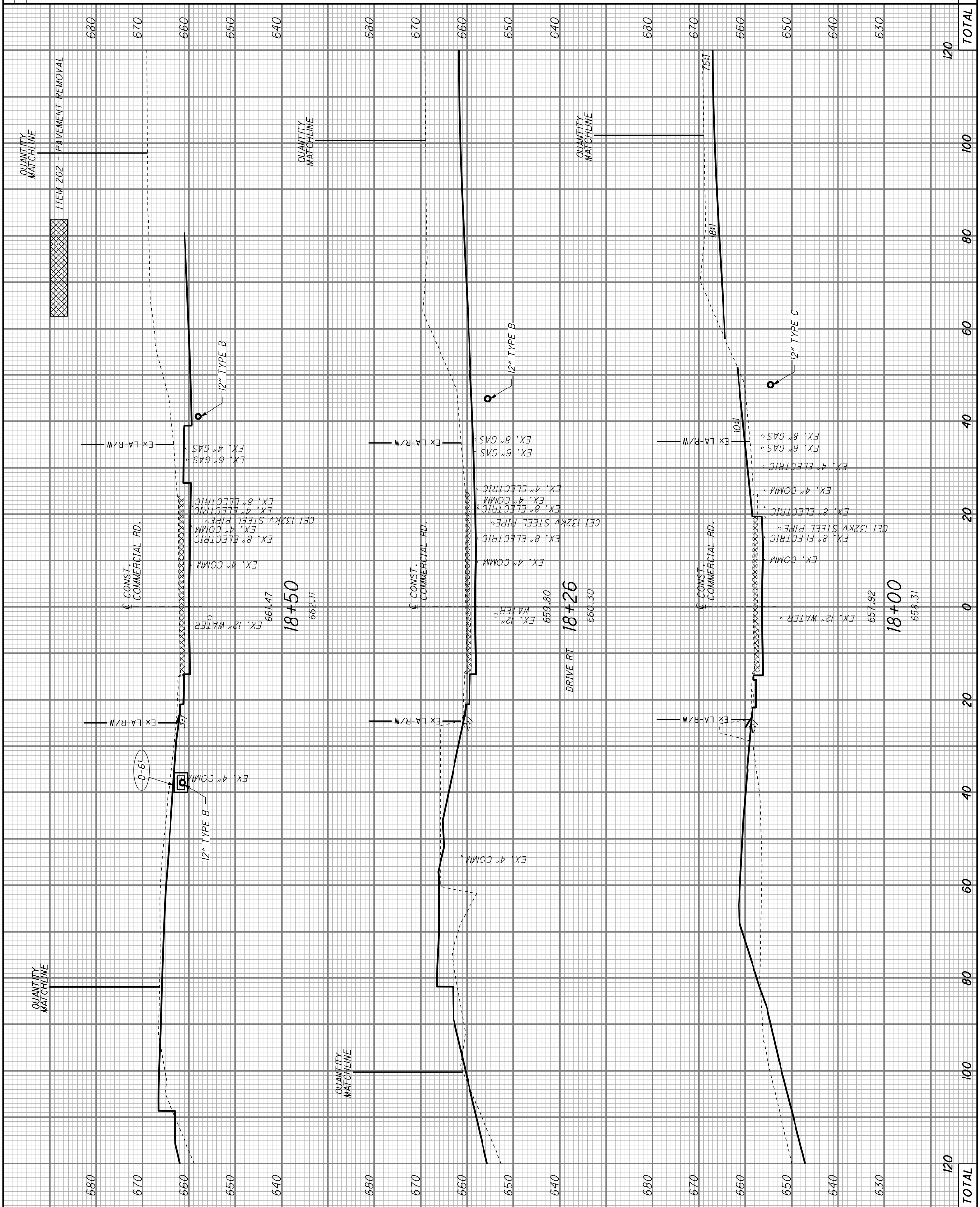
NO.	REVISIONS	DATE
A	INTERIM SUBMITTAL	12/29/2010
B	ADDENDUM TO INTERIM SUBMITTAL	01/19/2011
C	FINAL SUBMITTAL	08/03/2011
D	FINAL SUBMITTAL TO ODOT	09/30/2011
E	FINAL COMPLIANCE	11/03/2011



(TO BE TURNED OFF AT AFC SUBMITTAL)

CHECK PRINT (INITIAL & DATE)	CHECKED BY:	MADE BY:
CORRECTED BY:	BACKCHECKED BY:	VERIFIED BY:

SEEDING
 END SO.
 WIDTH YDS.



END AREA	VOLUME	
	CUT	FILL
120	TOTAL	120

DESIGNED: JTL
 CHECKED: JRG
 SCALE IN FEET: HORIZONTAL

ROADWAY
 GATEWAY



WALSH HNTB
 DESIGN AGENCY

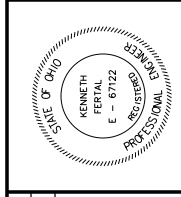
CROSS SECTIONS - COMMERCIAL
 STA. 18+00 TO STA. 18+50

CUY-90-14.90
 DWG. NO. XS-131

147
 349

REVISIONS

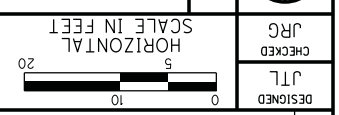
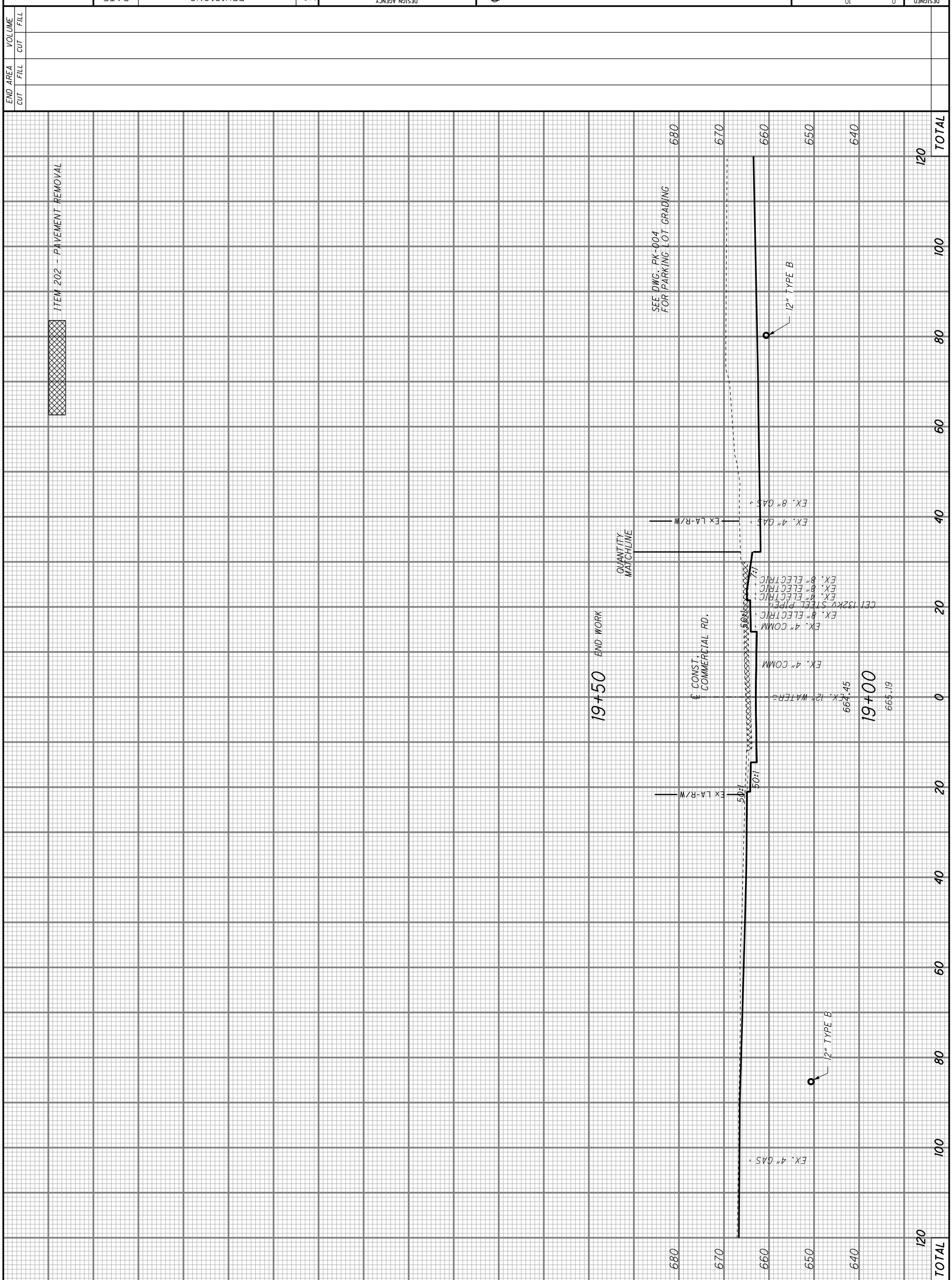
NO.	DATE	DESCRIPTION
A	12/29/2010	INTERIM SUBMITTAL
B	01/19/2011	ADDENDUM TO INTERIM SUBMITTAL
C	08/03/2011	FINAL SUBMITTAL
D	09/30/2011	FINAL SUBMITTAL TO ODOT
E	11/03/2011	FINAL COMPLIANCE



TO BE TURNED OFF AT AFC SUBMITTAL

MADE BY:	BACKCHECKED BY:	VERIFIED BY:
CHECK PRINT (INITIAL & DATE)	CHECKED BY:	CORRECTED BY:

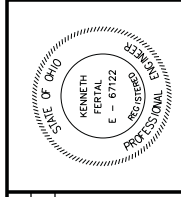
SEEDING	SO.	WIDTH	YDS.



CROSS SECTIONS - COMMERCIAL
 STA. 19+00 TO STA. 19+38

NO.	REVISIONS	DATE
A	INTERIM SUBMITTAL	12/29/2010
B	ADDENDUM TO INTERIM SUBMITTAL	01/19/2011
C	FINAL SUBMITTAL	08/03/2011
D	FINAL SUBMITTAL TO ODOT	09/30/2011
E	FINAL COMPLIANCE	11/03/2011

CROSS SECTIONS - COMMERCIAL
 STA. 19+00 TO STA. 19+38





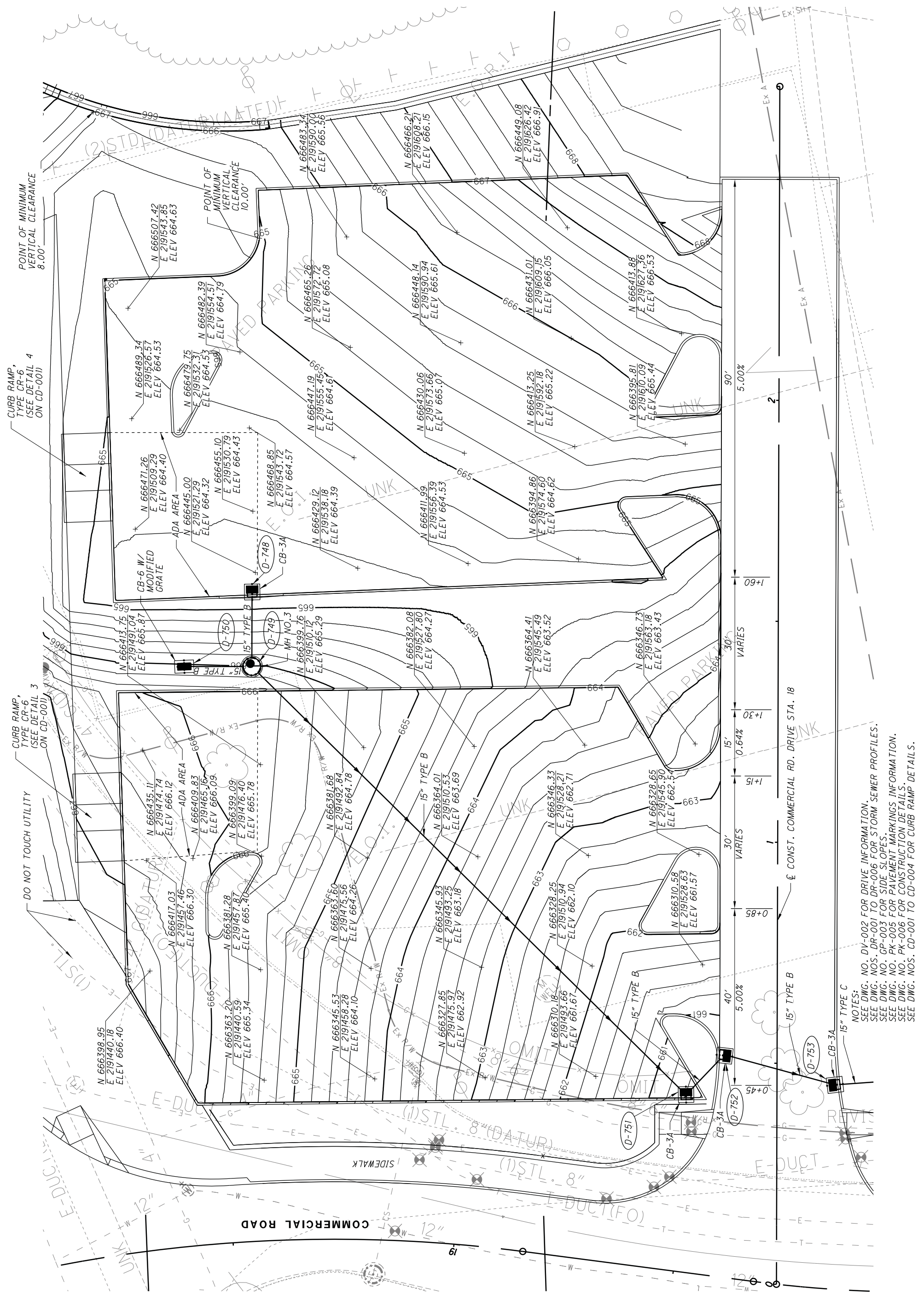
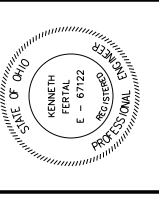
ROADWAY
GATEWAY



DESIGN AGENCY
WILSH HNTB

PARKING LOT PLAN
GRADING
DOWNTOWN NEIGHBORHOOD PARKING

NO.	REVISIONS	DATE
A	FINAL SUBMITTAL TO ODOT	08/02/2011
B	FINAL SUBMITTAL TO ODOT	09/30/2011
C	FINAL RESUBMITTAL	11/03/2011



NOTES:
SEE DWG. NO. DV-002 FOR DRIVE INFORMATION.
SEE DWG. NOS. DR-001 TO DR-006 FOR STORM SEWER PROFILES.
SEE DWG. NO. GP-003 FOR SIDE SLOPES.
SEE DWG. NO. PK-005 FOR PAVEMENT MARKINGS INFORMATION.
SEE DWG. NO. PK-006 FOR CONSTRUCTION DETAILS.
SEE DWG. NOS. CD-001 TO CD-004 FOR CURB RAMP DETAILS.

11/10/2011 5:49:46 AM Model:Sheet1 File:49633-S-RD-PRK01.dgn	MADE BY:	CHECKED BY:	BACKCHECKED BY:	VERIFIED BY:
	CHECK PRINT (INITIAL & DATE)			

(TO BE TURNED OFF AT AFC SUBMITTAL)